



A wonderful first floor three bedroom apartment in a prestigious development located on one of the world's most exclusive roads. Offering wonderful entertaining space and fantastic lateral living, the property comes with the additional benefits of secure underground parking and concierge services.

Located in arguably the most prestigious address in London, this three bedroom apartment is positioned on the first floor of the development and provides an abundance of light, with views stretching over Kensington Palace Gardens and the Palace itself. The living space comprises a good sized reception room, with study area, that leads through to the separate dining room for eight to ten people, allowing for plenty of entertaining space. There is then a built in kitchen with Gaggenau appliances, which can be accessed from both the dining room and also the hallway.

The master bedroom is a wonderful size with sumptuous wardrobes and a large en-suite bathroom and a seating area alongside a dressing table. Additionally, there are two further double bedrooms both with en-suite bathrooms and built in storage. The apartment also includes two underground parking spaces and 24 hour concierge services.

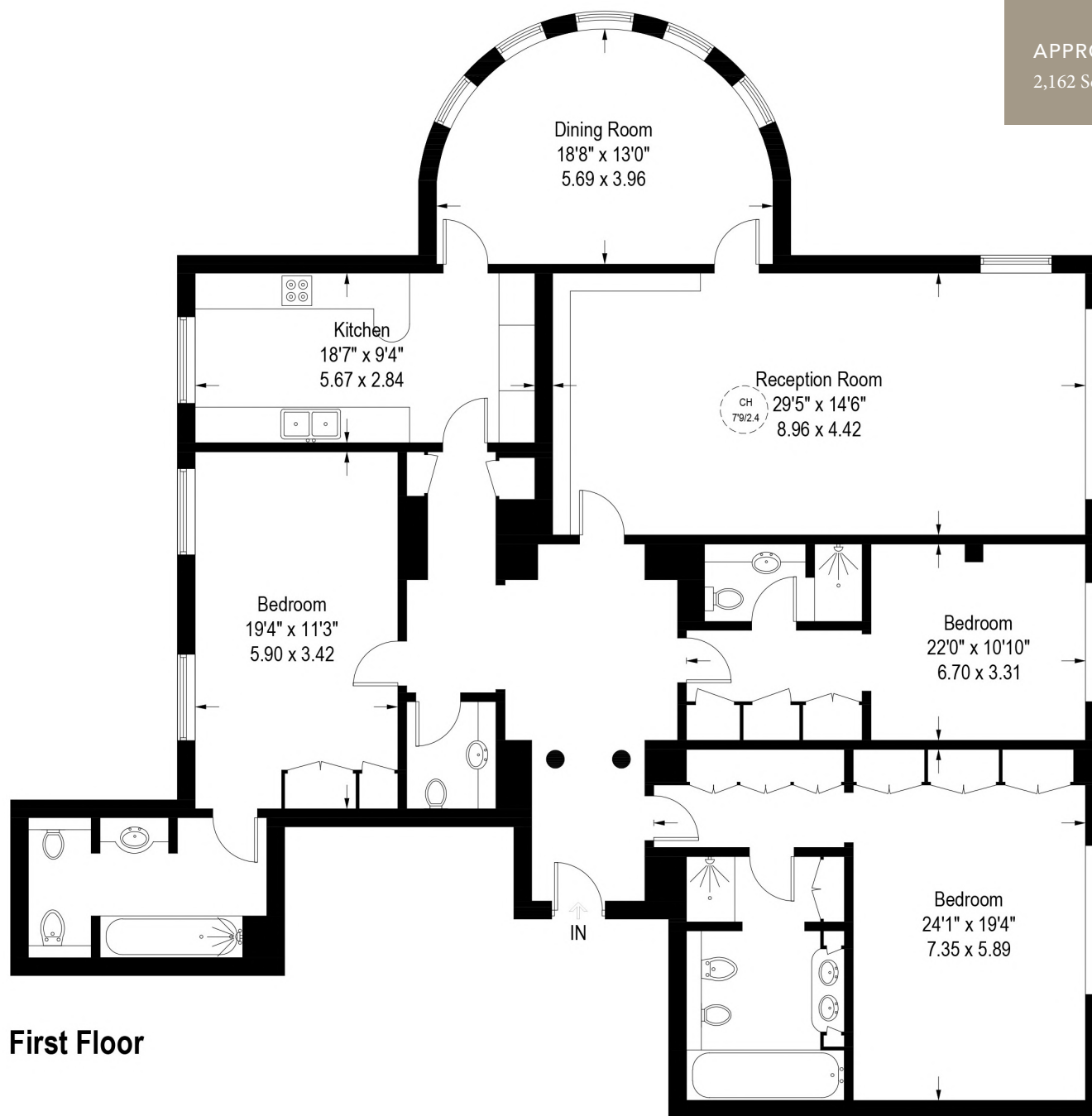
All potential tenants should be advised that administration fees may be applicable when renting a property. Please contact us for more details of these charges.



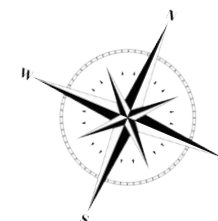








APPROXIMATE FLOOR AREA
2,162 SqFt / 200.9 SqM



First Floor

TERMS

Price £3,900 Per Week (£16,900 PCM)

Furnished

EPC
B

COUNCIL TAX BAND
H

LOCAL AUTHORITY
The Royal Borough of Kensington & Chelsea

Maskells

105 Kensington Church Street

London W8 7LN

Tel: 02078872532

sales@maskells.com

lettings@maskells.com

maskells.com